

MEMBERSHIP

Chair:

Andrew Haggerty: haggertyaj@sunybroome.edu

Academic Representatives:

Kristen Bensen-Hause, LA

Joel Miller, STEM

Darin Schmidt, BPS

Colleen Donahue, HS

Sherry Chandler, LAS

Karyn Moyer, Gen Ed Rep.

Carine Surdey, Distance Education Rep.

Administrative Representatives:

Michele Snyder, Dean, STEM

Michael Kinney, Dean, LA (Andrew Haggerty, rep.)

Dani Berchtold, CAO rep.

Larry Allen, IEO rep.

Robin Petrus, VP SCE rep.

Sesime Adanu, Dean of Institutional Effectiveness

Francis Battisti, CAO, *ex officio*

[SLAC Home](#)
[Mission and Bylaws](#)
[Minutes and Agendas](#)
[Membership](#)

APPLY AND REGISTER

[Apply](#)
[Courses by Semester](#)
[Financial Aid](#)
[Register for Classes](#)
[Take a Class](#)
[Tuition and Fees](#)

QUICKLINKS

[Academic Calendar](#)
[Bookstore](#)
[Campus Map/Parking](#)
[Diversity](#)
[Employment](#)
[Ice Center](#)
[Library](#)
[Site Translation](#)
[Transcripts](#)

CONTACT INFORMATION

SUNY Broome Community College

PO Box 1017
Binghamton, New York 13902

Phone: +1 (607) 778-5000

[Contact Us](#)

HEALTH & SAFETY

[Health Services](#)

[Public Safety](#)

[Title IX/SUNY SAVR](#)

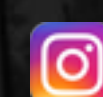
CONNECT WITH US



Facebook



Twitter



Instagram



YouTube