

CONTACT

Denise M. Abrams, PT, DPT, MA
Office: Decker Center, Room 217
Telephone: 607 778-5261
E-mail: abramsdm@sunybroome.edu
www.sunybroome.edu/pta

This program prepares you for work with your own caseload of patients under the direction and supervision of a physical therapist. As a PTA, you will carry out patient treatment plans that might include exercises for strength, endurance, coordination and range of motion, instruction in use of walkers, crutches, wheelchairs, and other rehabilitation activities. The science of Physical Therapy applies physical principles to human function to treat injury and disease. The use of heat, light, water, electricity, manual therapy and exercise are examples of patient interventions.

The Physical Therapist assistant will provide intervention to many patients each day. Lifting, moving, and walking with patients are everyday requirements. Each patient has individual goals and needs and the PTA helps each patient meet his or her goals.

Typically, patients who seek physical therapy are motivated to improve and gain back their functional independence.

A significant part of this program includes on-site clinical experiences. (The program is not designed as a transfer to a physical therapy degree program.)¹

According to the Bureau of Labor Statistics, Occupational Outlook Handbook, 2016-17, the national Physical Therapist Assistant wage average in 2014 was \$54,410 and the New York State average was \$52,500. By the year 2024, the national employment trend is expected to increase by 41%.

¹ This career area requires professional licensure through New York State Department of Education Office of the Professions. Graduates of this program are also required to pass a national licensure exam.

PHYSICAL THERAPIST ASSISTANT STUDIES:

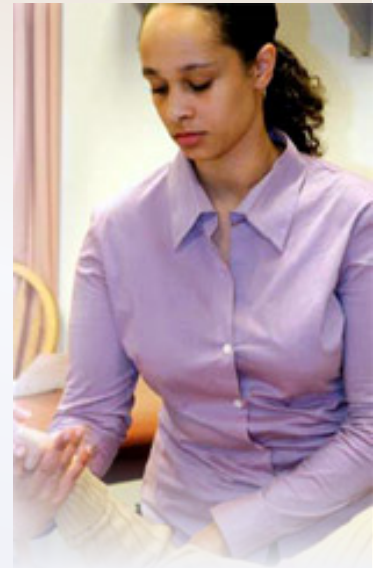
- Physical Therapy
- Physics
- Anatomy and Physiology
- Rehabilitation
- Physical Agents and Massage
- Kinesiology
- Therapeutic Exercise
- Clinical Training
- Psychology, Social Science, English

ADVANTAGES OF TAKING THE PROGRAM

A career as a Physical Therapist Assistant offers opportunities to work in diverse employment settings. PTA's may find employment in hospitals, private practices, schools, nursing homes, home care and sports facilities. The PTA can continue their education to earn a doctorate in Physical Therapy.

JOB OUTLOOK

- Employment is projected to increase much faster than average.
- Most jobs were in offices of physical therapists or in hospitals.



APPLY ONLINE AT

www.sunybroome.edu/apply

FOR FINANCIAL AID AND SCHOLARSHIP OPPORTUNITIES, CONTACT:

Email:
finaid@sunybroome.edu

Phone: 607-778-5028

Fax: 607-778-5451

Office:
Student Services 111

Regular Hours:
Mon - Fri, 8 am - 5 pm

Summer Hours:
Mon - Fri, 8 am - 4 pm

SEQUENCE OF COURSES

The following coursework must be successfully completed to earn the A.A.S. degree in Physical Therapist Assistant:

First Year

Fall Semester 19 Credits

- BIO 131 - Anatomy and Physiology I
- ENG 110 - College Writing I
- PSY 110 - General Psychology
- PTA 100 - Introduction to Physical Therapy I
- PTA 104 - Basic Musculoskeletal Anatomy
- PHY 118 - Physics for Physical Therapist Assistants

Spring Semester 17 Credits

- BIO 132 - Anatomy and Physiology II
- PTA 101 - Introduction to Physical Therapy II
- PTA 102 - Introduction to Rehabilitation
- PTA 103 - Physical Agents and Massage
- MDA 114 - Standard First Aid Management of Emergencies

Summer Term 6 Credits

- PTA 110 - Clinical Affiliation I
- PSY 210 - Human Development

Second Year

Fall Semester 12 Credits

- PTA 201 - Kinesiology
- PTA 202 - Therapeutic Exercise
- PTA 210 - Clinical Affiliation II

Spring Semester 12 Credits

- PTA 213 - Senior Seminar I
- PTA 224 - Senior Seminar II
- PTA 220 - Clinical Affiliation III

CREDITS REQUIRED TO GRADUATE: 66

ACCREDITATION

The Physical Therapist Assistant Program at SUNY Broome is accredited by the Commission on Accreditation in Physical Therapy Education (CAPTE).

1111 N. Fairfax Street, Alexandria, VA 22314.
 Phone: 703-706-3245
accreditation@apta.org
www.capteonline.org

PRE-REQUISITE REQUIREMENTS AND/OR ACADEMIC PREPARATION FOR ADMISSIONS:

1. Math Level III
 Or Math B (min. grade 74)
 Or Applied Math through math IV (min. grade 74)
 Or Equivalent (HS math through Algebra and Trigonometry, min. grade 74)
2. Regents Biology
 OR Applied Science I and II (min. grade 74)
 Or Equivalent (min. grade 74)
3. Chemistry OR A.S. I, II
 Or Equivalent (min. grade 74)
4. Fifty hours of volunteer service learning in a hospital providing Physical Therapy are required prior to enrollment in PTA courses. Contact department for information.

ACADEMIC PREPARATION FOR THIS PROGRAM

If you do not have the necessary academic preparation for your chosen program, you may take preparatory courses at SUNY Broome to strengthen your academic background. Advisors are available to assist you in selecting appropriate preparatory coursework.

SUNY Broome Community College does not discriminate on the basis of race, sex, color, religion, age, national origin, disability, marital status, sexual orientation, or status as a disabled veteran or veteran of the Vietnam era in the recruitment or education of students; the recruitment and employment of faculty and staff; or the operation of any of its programs or activities. Where relevant, state and federal laws apply.

For more information, go to
www.sunybroome.edu/healthsciences